

Cover image
Model of networks
at University Hospital Complex,
Pointe-à-Pitre - Guadeloupe (97)

CONTENTS

EDITORIAL	2	AWARDS	15	
Interview with Yves Metz, President of Ingerop		2023: MAINTAINING MOMENTUM...	16	
COMMITTED TO CLIMATE ACTION	5	...WORLDWIDE	18	
READY & RESPONSIBLE	8	SEVEN DIVISIONS	20	
8 Ecology & Strategy Interview with François Lacroix		22 BUILDINGS	38 INFRASTRUCTURE	
10 Human Resources & Talent Interviews with Jacques-Olivier Durand, Céline Morinière Lambert & Marine Béclin		26 WATER	42 TRANSPORTATION	
EXPERTS & PARTNERS	12	30 ENERGY	46 URBAN DEVELOPMENT	
12 Research & Intrapreneurship Interview with François Lacroix		34 INDUSTRY	LEADERSHIP TEAM	50
14 Innovation & Digital Solutions Interview with Ludovic Vaz		CERTIFICATION & ACCREDITATION	54	
		OFFICES	56	



HIGHLIGHTS

2023 / 2024

- 1 Delivery of projects linked to the 2024 Olympic and Paralympic Games in Paris**
Athlete village and media village, February and March 2024 France, Saint-Denis - 93
- 2 The new Paris hub for sports and culture,**
with seating for 8,000 people, was inaugurated on 11th February 2024 France, Paris - 75018
- 3 Signature of a framework agreement between newcleo and Ingerop** to design
and build a new fast neutron reactor and MOX pilot facility France, Saint-Fons - 69
- 4 Inauguration of Symbio's SymphonHy gigafactory** - Hydrogen fuel cell production France, Saint-Fons - 69
- 5 Handover of Isère river management** to Syndicat Mixte des Bassins Hydrauliques de l'Isère France, Isère - 38
- 6 Inauguration of the Réseau Express Métropolitain (REM) in Montreal,** 28th July 2023 Canada
- 7 Commissioning of the Pleyel interchange** in Saint-Denis France, Seine-Saint-Denis - 93

"Engineering solutions address today's biggest challenges, including the energy transition, the reindustrialisation of France and climate change. They permeate all of our projects, along with the issue of digital sovereignty. Whether dealing with transport, industry, infrastructure or buildings, eco-design is everybody's business."



Yves Metz

PRESIDENT

2023 was a very dynamic year, driven by the development of synergies between divisions, specialisations and locations. The order book grew from €470 million to €690 million, representing 19 months of business. Ingerop expanded its presence in Germany, England, Spain, Canada and Australia, with Australia now the group's third-largest international market. The workforce topped 3,000 employees worldwide, including 2,000 in France. Ingerop enhanced its strategic expertise by making new acquisitions and setting up the Actierra subsidiary to spearhead solutions for the green transition. ●

2023 saw a number of successes. In what way do they embody the Vision 2027 strategy?

___ Beyond the outstanding resilience of our sector, they showcase our group's strong positioning and a significant shift in scale, enhancing our visibility in France and around the world. Clients are calling on us to handle projects that are increasingly complex and substantially larger in scope. The contracts with Société des Grands Projets are among the largest since the group's inception. They span infrastructure, transport systems and buildings, as well as digital and environmental challenges. They demonstrate both the excellence of our scientific and technical expertise and the complementarity of our different divisions. This growth goes hand in hand with the drive to bolster our European presence while building our international development strategy to stay close to clients and boost our external growth.

The environment is a cornerstone of every project. How have you incorporated the issue into your solutions?

___ We are committed to addressing the concerns of our clients and the significance of their projects. In 2022, faced with the climate emergency and its impact on our business (e.g. carbon footprint management, resource management, certification, biodiversity protection and climate change adaptation), we substantially strengthened our expertise in ecology and sustainability by acquiring a consulting firm that specialises in climate policies and climate strategies. In 2023, well aware of the fact that eco-design is everybody's business, we stepped up these efforts by bringing together over 200 experts and scientists to form a new subsidiary, Actierra. Actierra will provide specialist support to the group while delivering solutions directly to its own clients. We also acquired L'Atelier des Territoires in 2023, for that same reason.

Engineering is at the forefront of major transformations in industry. What are currently the biggest challenges?

___ For our industrial clients, those challenges are twofold. The first involves relocating businesses and building new sites or expanding existing ones across key sectors such as pharmaceuticals, biotech, batteries, renewable energy, nuclear, defence, aerospace and agrifood. The second involves improving processes and optimising land and building assets. We have honed our expertise by investing in training, innovation and external growth to bring low-impact solutions to our clients. In addition, two major contracts have established Ingerop as a comprehensive solutions integrator: a hydrogen production facility for an EDF subsidiary and a research lab project for a client in the automotive industry.

In what way is digital technology driving transformation?

___Digital technology transforms our production methods and the services we provide to clients. Despite the rapid pace of the digital transition, we remain at the cutting edge. This includes artificial intelligence, where we constantly stay abreast of the latest developments to explore new approaches with our clients. It also encompasses augmented engineering, digital twins and related areas such as sovereignty, cybersecurity and training. In France, we have enhanced our in-house expertise in IoT cybersecurity through external growth, establishing ourselves as a key partner for all government departments.

Ingerop now has over 3,000 employees, including 2,000 in France. What message would you like to convey to those who have just joined the group?

___I would like to welcome all the new team members now “inventing for tomorrow”. Their commitment is key to tackling the major challenges of the different transitions, backed by the group's commercial strength, scientific and technical expertise, and welcoming, supportive work environment. Ingerop is a dynamic and attractive company. Our employees are actively involved in addressing the most important issues of our time. Over half of a project's carbon footprint is practically irreversible once the preliminary design has been approved. The comprehensive intelligence we provide from the get-go can improve the operations, maintenance and lifespan of projects. Why not embark on the adventure with us?! 🌍

↓ Infrastructure and Urban Development seminar - September 2023



Committed

TO CLIMATE ACTION

__Since 1990, global GHG* emissions have risen by 58%. In 2023, eight years after the Paris Agreement, COP28 reiterated the goal of preventing an average temperature increase of more than 2°C above pre-industrial levels. In France, greenhouse gas emissions primarily come from transport (32%), manufacturing and construction (18%), buildings (16%) and electricity production (11%). Against this backdrop, the energy and environmental transitions are a cornerstone of engineering solutions and societal concerns ●

ENGINEERING SOLUTIONS AND ANTICIPATION

Engineering solutions for existing infrastructure, buildings and factories went from strength to strength in 2023. Reindustrialisation in Europe—and especially in France—ripples through key sectors such as pharmaceuticals, fine chemicals, batteries, hydrogen and agrifood. All of these industries must be revamped in line with key challenges spanning biodiversity, decarbonisation, resilience, energy efficiency, use of bio-based and low-carbon materials, and environmental externalities. More than 120 new employees came on board in 2023 to enhance the group's expertise and strengthen its global reach in these areas.

ENGINEERING ACTION

Engineering plays a crucial role in projects from the outset to enable a long-term reduction in environmental and energy footprints. Tomorrow's outcomes are contingent on today's creativity and innovation. With this in mind, all Ingerop divisions focus on these issues and help clients to better anticipate regulations and gauge results. In urban and rail transport, Ingerop enhanced its expertise with the 2023 acquisitions of Spanish company Leedeo Engineering—which specialises in Reliability, Maintainability, Availability and Safety (RAMS), Electromagnetic Compatibility (EMC) studies and systems engineering—and UK-based T&RS Engineering Limited—which focuses on rolling-stock maintenance and overhaul. The acquisition of SGI Suisse the same year also reinforced Ingerop's capabilities in urban water and hydrothermal systems in Europe and Africa.

* GHG: Greenhouse Gas

DIGITAL TECHNOLOGY ENHANCING ECOLOGY

People often associate ecology with low-tech or traditional solutions, which makes harnessing the power of digital technology for green initiatives a real challenge. As things stand, most of Ingerop's digital initiatives address environmental issues such as impact assessments, low-carbon thinking, conservation of materials, bio-based sourcing, or lifespan extensions for facilities—all with a view to having a positive environmental impact.

- ◉ **ecale** is the first carbon assessment tool for the facades of buildings, using 3D modelling to enable low-carbon design.
- ◉ **Calcab Structure** adapts Ecale to building support structures.
- ◉ **Infra Cost** assesses the carbon footprint of infrastructure and urban developments, and is certified by Association Bilan Carbone.
- ◉ **Xchange** is a service for the reuse of materials and excavated earth in construction projects.
- ◉ **Ecothemis** is the first quantitative tool for assessing biodiversity gains and losses.

EXPERTISE IN PLANNING, THE ENVIRONMENT AND URBAN DEVELOPMENT

In France, after many years of working with Ingerop, Atelier des Territoires decided to join the group to continue its growth in sustainability and the environment. Co-founded by Claude Maury over 30 years ago, Atelier des Territoires has a team of 33 people who work closely with clients in the public and private sectors to make their projects happen 🌱



↑ Left to right: Basile Heil, head of L'Atelier des Territoires – Claude Maury, co-founder of L'Atelier des Territoires – Yves Metz, president of Ingerop Group – Pierre Chaugny, head of Infrastructure, Urban Development and Transportation for North-East France and Ingerop Group Chief Sustainability Officer.

KEY FIGURES

Based on the Nationally Determined Contributions (NDCs) announced until October 2021, **current forecasts project an increase in global warming of 3.2°C by 2100.**

In France, the government is modelling a warming scenario of +4°C.

Source: IPCC



ACTIERRA, ADAPTING TO THE WORLD AROUND US

Climate, water, sustainable development and construction, biodiversity and the regulatory environment

Established on 1 January 2024, Actierra is set to be a key market player. The multifaceted new subsidiary brings together over 200 experts from within the group and is firmly focused on the environment.

SUSTAINABILITY AND EFFICIENCY IN ENGINEERING

Ingerop has made ecology a priority for years, bringing on board an array of experts to enhance its team. The group incorporates the full range of environmental factors into project planning from the outset. Actierra is a catalyst for this commitment. As a leader in eco-design, Actierra will provide Ingerop's 3,000 employees with even more advanced expertise and bolster their awareness and training on environmental issues. By 2027, the goal is to ensure that 100% of Ingerop project managers have completed the "360° Environment" training programme developed with Actierra.

MULTIFACETED, WITH A 360-DEGREE APPROACH

Actierra will support Ingerop's clients and partners through the entire lifecycle of their projects, from initial strategy to operations, incorporating environmental considerations into processes and methods. The goal is to rethink design by assessing the resilience of all concept design and detailed design initiatives every step of the way.

DEVELOPING NEW EXPERTISE

Actierra works directly with its own clients. It has a wide range of opportunities: supporting environmental commitments related to CSR and CSRD*, reducing environmental impacts, enabling low-carbon design of buildings and infrastructure, analysing usage and existing structures, promoting the circular economy and reuse of materials, and developing green industry. 🌱



READY & responsible

ECOLOGY AND STRATEGY ↓

Because engineering plays a crucial role early in the value chain for many clients and stakeholders, it shoulders a huge responsibility to offer innovative solutions and make our natural surroundings a priority. In response to the climate and ecological emergency, Ingerop is increasing its involvement in projects with the utmost positive impact on the environment. In 2023, we chose to create Actierra, a subsidiary dedicated to the environment, and also published our first CSR report.

Interview ☞



Francois Lacroix
CHIEF SCIENCE
& TECHNOLOGY OFFICER,
VISION 2027 ECOLOGY
& INNOVATION

Ecology is a cornerstone of the Ingerop strategy. Why is urgent action so vital?

First and foremost, climate change is progressing faster than expected and projections for 2050 compel us to step up our efforts. At the same time, people are finally realising that biodiversity collapse threatens both the planet and the human race: put simply, continuing to damage our natural surroundings is self-destructive! Half of the world's fertile soil has already been degraded, so how can we expect to sustain food production when it is all gone? We could say the same for all human activities, which all depend on having a healthy planet.

Corporate commitment is both a necessity and an opportunity. Companies are a key catalyst for behavioural change, alongside citizens and public policies. Without action, we risk facing tighter regulatory constraints in the future. This is Ingerop's vision, and we are leveraging our technical excellence and the innovative capabilities of our employees to deliver solutions.

How does that change the way you approach projects?

In two ways. First, at the project management level, where design choices are made, we always have to think about lower impact and higher resilience. Second, all of our areas of technical expertise are evolving in search of solutions that can offer greater ecological value and are also functionally and economically viable. For instance, there is a bright future for engineering solutions that target "what already exists"—adapting existing infrastructure rather than starting from scratch. This approach forces us to embrace the circular economy and input efficiency on a broader scale. Last, Actierra's opposite solutions can benefit the entire Ingerop team.

Effective from 1 January 2024, the European CSRD requires non-financial reporting for listed companies. This will affect Ingerop in 2025. What are you doing to prepare?

___ We will do a dry run in 2024 by publishing a sustainability report in line with CSRD standards. We aim to ensure transparency and we believe in the strategic value of the process. Developing our double materiality matrix will positively impact our value chain, for instance. What is more, tenders increasingly require environmental assessments and details about the carbon strategy applied to the project. The two metrics (resilience and carbon impact) we have introduced and implemented for all our projects will set us apart. Far from marring Ingerop's performance, they have actually given us an edge, as we proved in 2023! 🌱



A TRACKING SYSTEM FOR BEST PRACTICES

Ingerop is committed to continuous improvement in its environmental strategy. It has introduced a tracking system to steadily pool all feedback and scores to benefit the entire group.■

2023 Climate Fresk ↓



TWO METRICS FOR RESILIENCE AND CARBON FOOTPRINT ASSESSMENT

First announced in 2023, these two metrics are now in the testing phase. In 2024, they will be adapted for use across all of our divisions. **The goal for 2027 is to ensure that at least 80% of project management assessments follow the criteria set out by our dedicated system to gauge the carbon footprint and resilience of our projects.** ■

Download the 2023 CSR Report here ↓



HUMAN RESOURCES & TALENT MANAGEMENT ↓

__Engineering is at the forefront of efforts to create a more resilient world. In 2023, the group expanded its talent and expertise. The upskilling of all employees, particularly in digital technology and ecology, combines with knowledge transfer to put Ingerop on a path towards responsible growth.

Interview ↻



Jacques-Olivier
Durand
HR DIRECTOR &
GENERAL COUNSEL



Céline Morinière
Lambert
DEPUTY HR DIRECTORS



Marine Béclin

In 2023, Ingerop passed the milestone of 3,000 employees. What are the main challenges in terms of integration and culture?

__We provide orientation days for all new employees, whether they are new hires in our French offices or from engineering firms that joined the group during the year. We recently rolled out an international version of this orientation process for employees at our foreign subsidiaries. The initiative provides an opportunity for new employees to meet the leadership teams at Ingerop's head office. The goal is to ensure we are all on the same page in terms of communication, working methods and values. We are seeing a shift in employee engagement, all around us. Everyone is looking to make a meaningful contribution. In this respect, Ingerop's core mission speaks for itself. Joining Ingerop means being actively involved in transforming the cities of the future and participating in exceptional projects like the renovation of the Grand Palais in Paris or the Grand Paris Express metro system.

Attracting and retaining talent are two of the biggest challenges in the industry. What is Ingerop's strategy?

__Millennials are more mindful of values and their relationship with the company. Ingerop focuses on work-life balance and responsible action. That includes charitable and outreach initiatives. In the predominantly male construction sector, we have ambitious plans for gender diversity. Recruitment of women is trending up, and we are actively present at school careers fairs. We have also set up leadership training for women, implemented measures to make everyday life easier, such as universal service vouchers (CESU), and organised sessions on sexism and gender stereotypes.

Ingerop is an independent company. Does that further enhance its appeal?

Ingerop's shareholders include over 400 senior managers. This unique structure influences the work environment, as well as our approach to projects and our sense of responsibility. The company is captain of its own ship and can implement change more quickly. Staff in France are also part of a company mutual fund, which holds a 10% stake in the group.

Everyone contributes to value creation. For many years, our various profit-sharing agreements have allowed us to redistribute part of our earnings. We have also improved the compensation package over time to include new benefits.

**Ecology is everybody's business.
How does that translate into training?**

___Ingerop has its own in-house training school, Campus Ingerop. It offers over 70 courses, often run by internal experts, and trains nearly 1,000 employees a year. Ecology and the environment have been a pillar of these programmes for a number of years. Acquiring the consulting firm Acterra has allowed us to develop training on "adapting to climate change in our project approach". Other courses cover specific topics such as heat islands and broader ecological issues, fostering a common culture across the group. Several hundred employees have also taken part in the Climate Fresk initiative. ➡



↑ Buildings seminar, June 2023

Orientation session with Stéphane Gautier, General Secretary of the Ingerop Group January 2024 →



70
training courses
in the Campus
Ingerop catalogue
run by our experts

1,000
employees
trained this year

**WHAT ARE THE TRADES OF TOMORROW?
HOW IS INGEROP PREPARING?**

The focus is more on broader areas of expertise rather than specific trades, such as sustainable development and decarbonised energy, with a creative and integrated vision of innovation that stretches beyond regulatory requirements alone. Some company departments are already dedicated to these issues. Digitalisation requires a wider consideration of the skills that are set to shape trades and services across the board, such as BIM and digital twins. The science and technology department is helping to ensure we are ready by targeting key skills development cycles. ■



Experts & PARTNERS

RESEARCH & INTRAPRENEURSHIP↓

__Digital technologies have transformed design and production processes in engineering. Statistical data processing capabilities have surged in recent years at very competitive costs. Against this backdrop, companies like Ingerop, underpinned by continuous research and innovation, can provide high-value solutions to the construction industry, especially in terms of energy and environmental impact.

Interview ↻



Francois Lacroix
CHIEF SCIENCE
& TECHNOLOGY OFFICER,
ECOLOGY & INNOVATION,
VISION 2027

What is Ingerop's vision for research?

Ingerop's identity is rooted in a strong scientific culture, cutting-edge technical expertise and a commitment to meeting client expectations both in France and around the world. The growing complexity of issues requires more interdisciplinary research. We work with leading academic institutions and laboratories in Europe and further afield, developing joint projects such as co-supervised theses and partnerships in response to calls for proposals (e.g. DuReTerre projects backed by the ANR* and InBridge4EU), which involves several European research teams. This collaborative approach is a key metric for our Vision 2027 business plan.

In 2023, you launched the third season of the intrapreneurship programme, which began in 2019. Why did you decide to invest in equity?

Innovation is evolving in step with new sources of inspiration. By creating our IN³ incubator, we wanted to engage with the approaches of startups, some of which are our clients. The group-wide programme has sparked amazing internal dynamics. In 2023, we established an equity investment strategy, focusing on seed and Series A fundraising. Previously, Ingerop invested solely in engineering companies with a view to integration and expansion. Now, we acquire minority stakes in startups, prioritising strategic over capital gains. We focus on technical and commercial synergies, knowledge accelerators, particularly in geomaterials. This strategy enables us to tap into future trends.

Innovations span all Ingerop divisions, unlocking an array of synergy. How do you make the most of them?

Currently, 75% of IoT projects worldwide are in the urban, building, industrial, mobility and energy sectors. These are our core businesses and this trend is something that affects us, particularly in terms of cybersecurity. In fact, our subsidiary GLI experienced remarkable growth in 2023. For several years, Ingerop has also been building a DST-BIM* network to share knowledge of resources and best practices. This network now includes expertise in GIS* and digitising existing infrastructure.

How do you gauge the benefits of these innovations?

We have two metrics. The first reflects effort and investment in R&D. We meet our goal of 150,000 research hours annually, both in France and around the world. The second tracks the revenue from projects incubated by our intrapreneurship programme. This is relevant as it reflects Ingerop’s innovative solutions. Our target is a cumulative €20 million over the duration of the plan. 🌐

INTRAPRENEURSHIP: THE QUALITY OF IN-HOUSE INNOVATION

The third season of the IN³ incubator sparked several flagship projects.

L'OREILLE D'OR

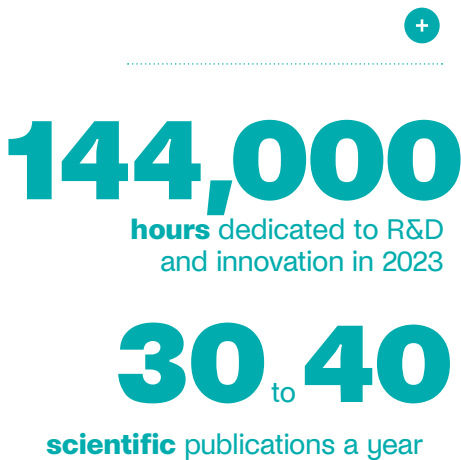
Uses neural networks to detect abnormal events. The robotisation of industrial production lines has eclipsed the ability to detect unusual noises by human ear. Hence the idea of combining continuous sound recording with AI learning.

INGEROP MOBILITY

Uses mobile phone data to better understand population mobility, helping to anticipate issues like road congestion.

ECALE

A carbon configurator for building facades. This online freeware innovation enables resource sharing to ensure our teams receive more detailed reports. ■



L'Oreille d'Or project pitch ↓



* ANR: French National Research Agency
DST: Science & Technology Department
GIS: Geographic Information System

INNOVATION & DIGITAL SOLUTIONS ↓

—The rise of cloud solutions, artificial intelligence, the development of IoT devices and the climate emergency outline the challenges of digital transformation. **In 2023, Ingerop created a team fully focused on developing digital solutions.**

Interview 🗣️



Ludovic Vaz

DIRECTOR,
BUILDINGS,
AND HEAD OF
DIGITAL STRATEGY
FOR VISION 2027

How has digital technology changed design approaches?

BIM, now widely adopted in building construction, was the first real turning point. Ingerop was a pioneer with the Canopée des Halles, one of the first major projects designed using a digital twin. In infrastructure and urban development, where BIM is less established, the sector is still looking for the best solutions. More broadly, digital technology enables faster, better, greener designs in terms of energy performance and lifespan. Iterative design explores multiple scenarios early on, computational design accelerates problem solving, and digital twins provide a raft of use cases. Coding and algorithm development are now essential aspects of in-house expertise. In 2023, we recruited people with purely digital backgrounds, which was a first.

How do you deal with the dark side of connectivity: the cyber risk that plagues players in both the public and private sectors?

The proliferation of industrial IoT devices makes buildings and infrastructure more vulnerable. This year, we gave ourselves an edge with our support solution for risk analysis, integration of cyber specifications and certification assistance. The most salient example is our ongoing work on systems for stations on Line 18 of the Grand Paris Express.

What are the latest challenges?

In our businesses, we increasingly use software solutions provided via the cloud, which raises questions about data governance and integrity. In 2023, we began a campaign to explore the management, exploitation and potential value of our technical data. The data accumulated from our projects have real value, and it is up to us to leverage that information effectively. 🌐

AWARDS



In 2023, we received the Ecovadis Silver Medal for the quality of our CSR management system and our environmental and social performance. That puts Ingerop among the most responsible engineering companies.

Continuous improvement is our priority, with an unwavering focus on client satisfaction and employee fulfilment.

Gold Award in the national EGF BTP “Innovation for a Sustainable World” competition

Awarded to Eiffage Construction for Lycée Gergovie in Clermont-Ferrand, this award acknowledges the environmental approach of the new timber-framed school, which uses 17,000 straw bales for insulation and bio-based materials. Ingerop’s teams were responsible for design studies in concrete structures, HVAC, plumbing, lab furniture, fire safety systems, high and low voltage systems, photovoltaics, roads and utilities.

Rendel

Construction News Workforce Awards 2023

Rendel, the British subsidiary of the Ingerop group, received an award for its many initiatives to promote equality, diversity and inclusion. This includes the active participation of female employees in the international football tournament organised by Ingerop.

Eiffel Steel Architecture Award in the “Heritage” category for the Halles 1 & 2 project in Nantes

Spearheaded by Nantes Métropole, Samoa and Gardera & Pastre architects, the Halles renovation preserved the legacy of the former Alstom halls. This award acknowledges Ingerop’s expertise in overseeing the technical aspects of the project, ensuring the building retains its industrial heritage.



Eiffel Steel Architecture Award in the “Span” category for the Seibert Bridge in Boulogne-Billancourt

Designed by ARI and RCR Architectes, the Seibert Bridge connects Ile Seguin to Meudon in Hauts-de-Seine. The structure features a bowstring design. Ingerop assisted its client, local public company Val de Seine Aménagement, on everything from initial sketches in 2017 to the project’s completion in 2022.

Digital Twin Award for the Quai Deschamps project in Bordeaux

At BIM World, Ingerop joined client Etablissement Public d’Aménagement Euratlantique and partner Colas to receive the Digital Twin Award in the “Digital Continuity” category.

The digital twin for Quai Deschamps represents a 400m stretch of road with two lanes in either direction on Bordeaux’s right bank. ●



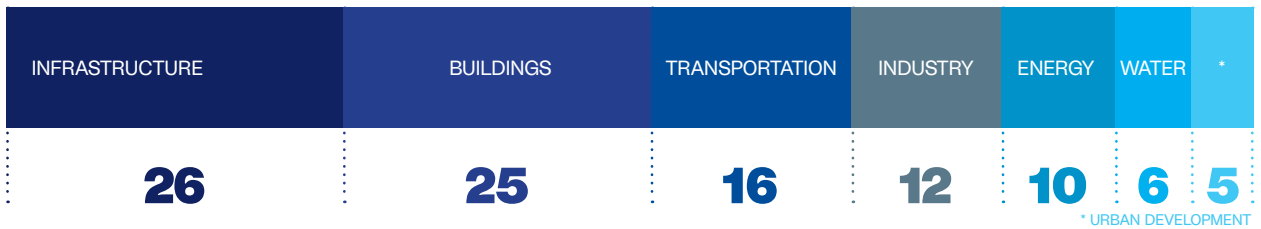
Construction News Workforce Award 2023 ↓



Left to right →
Eiffel Award
Digital Twin Award

2023 *maintaining* MOMENTUM

BREAKDOWN BY DIVISION (%)



OFFICES

96

REVENUE
FRANCE / INTERNATIONAL (%)



ORDER BOOK (€ MILLION)

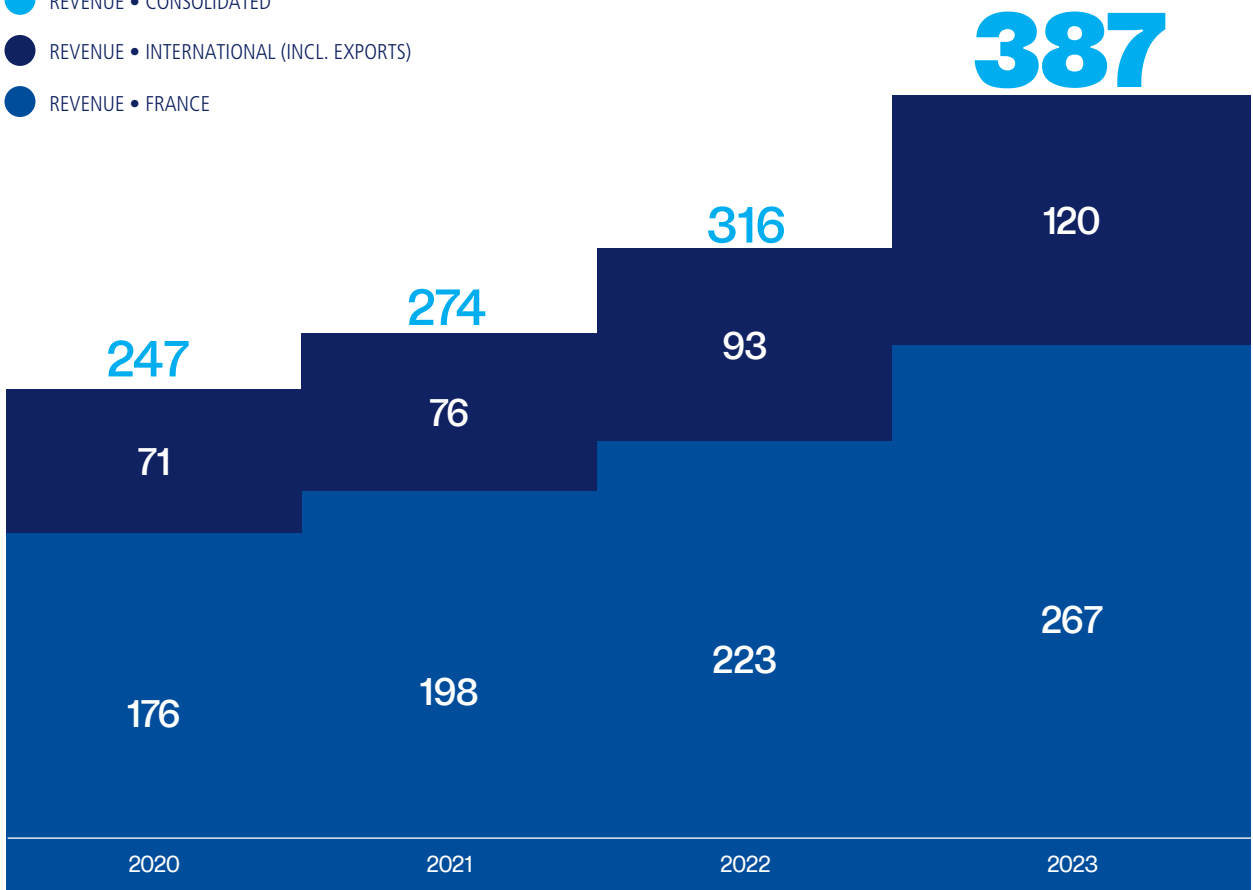


EMPLOYEES WORLDWIDE

3 000

REVENUE (€ MILLION)

- REVENUE • CONSOLIDATED
- REVENUE • INTERNATIONAL (INCL. EXPORTS)
- REVENUE • FRANCE



SHAREHOLDERS

100

% of share capital held by employees

90% held by senior management

10% held by employees
via company's mutual fund

...WORLDWIDE



OUR SUBSIDIARIES ABROAD

NORTH AMERICA

Ingerop CANADA
 • INGEROP QUEBEC
 Ingerop MEXICO

SOUTH AMERICA

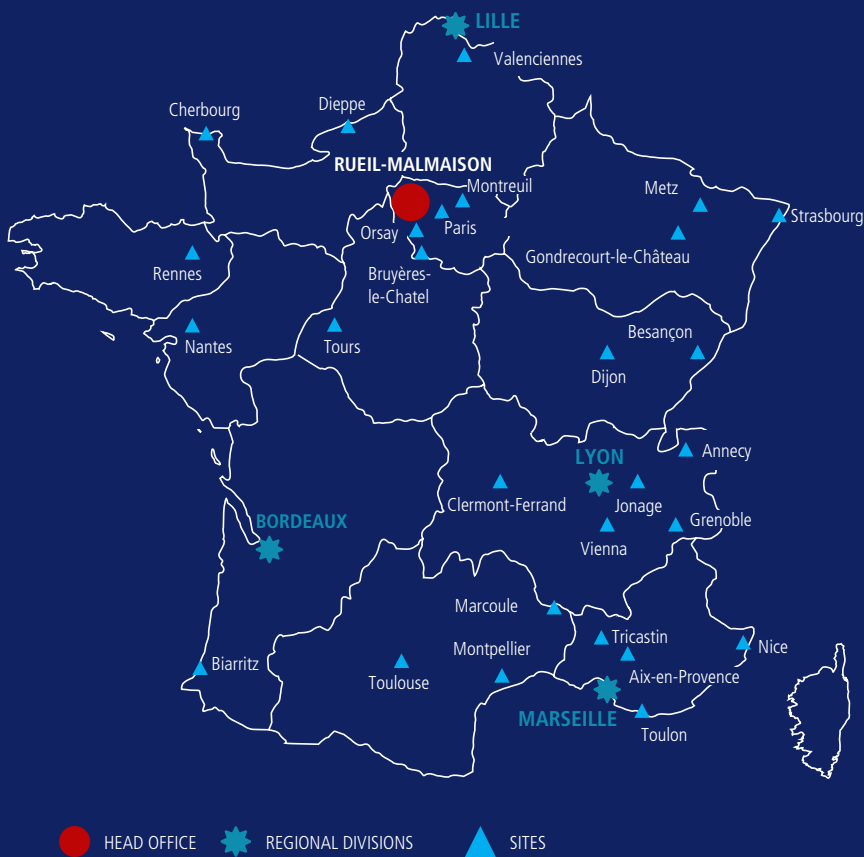
Ingerop PERU
 Ingerop CHILE
 Ingerop COLOMBIA

AFRICA

HORIZON PROJECT MANAGEMENT
 INGEROP BENIN
 Ingerop INTERNATIONAL
 CONSULTANTS
 Ingerop SOUTH AFRICA
 Ingerop AFRIQUE INGÉNIERIE
 Ingerop EAST AFRICA
 Ingerop IVORY COAST
 INTEC
 SGI TANZANIA
 SGI SENEGAL

ASIA-PACIFIC

ASPEC
 INGÉROSEC
 RENDEL INGEROP



REUNION

Sainte-Clotilde

GUADELOUPE

Baie-Mahault

MARTINIQUE

Le Lamentin

SAINT-MARTIN

Grand Case

& IN FRANCE**EUROPE**

GÉOS INGÉNIEURS CONSEILS

INGEROP BELGIUM

INGEROP BULGARIA

INGEROP DEUTSCHLAND:

• BAU+PLAN

• IBF

INGEROP MONTENEGRO

INGEROP MONACO

INGEROP LATVIA

INGEROP POLSKA

INGEROP T3

• LEEDEO ENGINEERING

• SMART 2

RENDEL

• RENDEL INGEROP IRELAND

• T&RS ENGINEERING

SGI SUISSE

ACTIERRA

ACXES BY INGEROP

ARCORA

ATELIER DES TERRITOIRES

AVLS

CICAD

DELTAÈDRE ENGINEERING

GÉOS INGÉNIEURS CONSEILS

GLI

GUEZ CARAÏBES

INGEROP CONTRACTING

INGEROP LIFE SCIENCES

MAZET & ASSOCIÉS



7 DIVISIONS



BUILDINGS

Designing high-performing and sustainable buildings where people can learn, live, work, receive care and feel good.

WATER

Designing hydraulic and river infrastructure. Creating, expanding and redeveloping ports. Promoting well-managed development of facilities to protect natural surroundings.

ENERGY

Addressing the climate emergency by tackling the challenges of producing low-carbon electricity and proposing efficient solutions for energy storage, management and transport.

INDUSTRY

Meeting client needs every step of the way. Innovating alongside industrial partners to successfully navigate upcoming transitions and address future challenges.

INFRASTRUCTURE

Designing, implementing and redeveloping sustainable transport infrastructure. Devising mobility solutions to meet changing needs.

TRANSPORTATION

Enabling comfortable, accessible travel solutions for everyone. Developing networks with state-of-the-art systems. Anticipating new mass transit needs.

URBAN DEVELOPMENT

Turning towns and cities into low-carbon, resilient urban areas adapted to climate change.

BUILDINGS

“Our cities now suffer from a housing shortage and an excess of office space, which is why we developed specific building renovation and conversion services. Transforming usage is a technical challenge; utilising existing structures is an opportunity. When construction is necessary, we deliver cutting-edge low-carbon solutions like timber construction, drawing on extensive experience in the field. The buildings of tomorrow will be less carbon-intensive, more energy-efficient and smarter. Still, we have to limit the layers of systems and networks to save materials. We guide our clients towards the best balance between performance and efficiency. 'Lean' is our mantra.” • *Ludovic Vaz* Director, Buildings •

Talent



Colin Uffelman

HEAD OF ARCHITECTURE
INGEROP DEUTSCHLAND

“When I started heading the architecture department at Ingerop Deutschland four years ago, I never imagined such remarkable growth! Our team, the scale of our projects and our revenue keep expanding. I am firmly committed to developing architecture within the group.” •



Nicolas Couyard

HEAD OF DIGITAL SOLUTIONS

“Digital technology at Ingerop is a twofold challenge that involves giving ourselves the tools and methods needed to improve our digital practices and boost productivity while also mastering emerging technologies such as data science, AI and scanning to transform our businesses.” •



↑ HÔPITAL DU GRAND PARIS NORD

📍 FRANCE • SAINT-OUEN (93)

⚙️ AP-HP

The university hospital is part of a standard-setting campus project that is ambitious in terms of its size (spanning 200,000 m² with over 1,100 beds), resilience, and functional and technical features, delivering both flexibility and scalability. The new facility is set to replace the Bichat and Beaujon hospitals, and will modernise and enhance patient care and services. Features include a rooftop garden, providing a breath of fresh air for staff, patients and visitors. This requires the discreet integration of technical systems into an intermediate level between functional services and the garden terrace. ●

↑ RESTRUCTURING THE CIC-CM HEAD OFFICE

📍 FRANCE • PARIS (75009)

⚙️ GROUPE CRÉDIT MUTUEL

Rehabilitation of the Le Victorien business block in central Paris blends BREEAM Excellent performance with new building uses. This second-generation renovation adapts the office spaces of CIC and Crédit Mutuel Alliance Fédérale to new working practices, preserving the block's heritage while enhancing its environmental profile. The interior restructuring creates more open, spacious, fluid work areas while maintaining the historical façades and roofs. ●



© Atelier 26 Architectes



206 LAFAYETTE

📍 FRANCE • PARIS (75010)

🏢 FINANCIERE SAINT JAMES / REDMAN

In the heart of Paris's 10th arrondissement, the 206 Lafayette project for Redman and Financière Saint James combines complexity with high environmental standards. The site is being fully redeveloped, with new low-carbon timber construction and extensive renovations to existing buildings, in line with the ambitious goals set out by the City of Paris. The dense urban environment and narrow plot are two of the challenges overcome by Ingerop subsidiary Cicad, which is overseeing scheduling, monitoring and coordination. The project spans 25 different trades and is due for completion in summer 2024. ●



"INSERRE" PRISON

📍 FRANCE • SAINT-LAURENT-BLANGY (62)

🏢 APIJ (AGENCE PUBLIQUE POUR L'IMMOBILIER DE LA JUSTICE)

This comprehensive performance-based contract covers the design, construction and layout of InSERRE prison, designed to house 180 male inmates.

It includes nine housing units, administrative buildings, a pre-release area, services and logistics, an intake/evaluation area, and training workshops.

The project is part of the "Chantiers de la Justice" programme, with a focus on building remand centres and adapted security facilities. ●



© Duchier + Pietra Architectes



© Sam testimonio 2

↑ LYCÉE RÉGIONAL GOLF HÔTEL DES MÉTIERS DE L'HÔTELLERIE ET DU TOURISME

📍 FRANCE • HYÈRES (83)

🌿 PROVENCE-ALPES-CÔTE D'AZUR REGION

This reconstruction on a 22,500 m² site will accommodate 700 students, including apprentices. The project features a gymnasium, sports facilities, staff housing, a 150-student dormitory and teaching kitchen.

It embodies the region's sustainable development policy and carries multiple certification under the energy-positive, carbon-reduction (E+C-) scheme, with a performance score of E3C1, in addition to NF HQE for tertiary buildings and bio-based materials.

The dining facilities cater to 225 students and customers of the three training restaurants at lunchtimes. ●

↑ TESTIMONIO II

📍 MONTE-CARLO, MONACO

🌿 ARCHITECTS: ALEXANDRE GIRALDI & ARQUITECTONICA;
PROPERTY DEVELOPERS: GROUPE MARZOCCO
& VINCI IMMOBILIER

Testimonio II is a flagship project in Monaco that features two residential towers standing 100 m and 110 m tall with sculpted panoramic balconies top to bottom, designed to reflect the seaside location. The complex also includes a ground-level nursery, the International School of Monaco, parking facilities and a high-end residential building topped with five private villas. ●

WATER

“Hydraulic, river and port infrastructure is inherently linked to the natural environment, providing leverage for sustainable development and territorial protection. Our experts are dedicated to designing new structures and rehabilitating existing ones to enhance water resources, study the effects of climate change on populations, biodiversity and infrastructure, and devise necessary adaptations. We improve performance, ensure safety and durability, and offer tailored solutions. Our presence in an array of countries allows us to work closely with our clients on their projects.” • *Carmelo Annaldi* Director, Water •

Talent



Abdelhakim L'Hocine

PROJECT MANAGER
MARITIME & PORT PROJECTS,
MEDITERRANEAN REGION

“We have a reputation for expertise in design-build projects. This type of project—like Milhaud 1—demands significant technical responsibility and the ability to strike a balance between the interests of the client and those of construction partners.” •



Elise Puigsegur

HEAD OF
URBAN DEVELOPMENT & TRANSPORTATION
NORTH-EAST FRANCE

“In our projects, such as doubling the Fontinettes lock, the BIM process is an essential part of preliminary studies to choose the right scenario and ensure effective teamwork. We start with a digital reference framework for project integration. Then we model a range of different scenarios.” •



↑
**TOULON NAVAL BASE
 MILHAUD 1 LANDING STAGE**

📍 FRANCE • TOULON (83)

⚙️ ÉTABLISSEMENT DU SERVICE D'INFRASTRUCTURE
 DE LA DÉFENSE DE TOULON

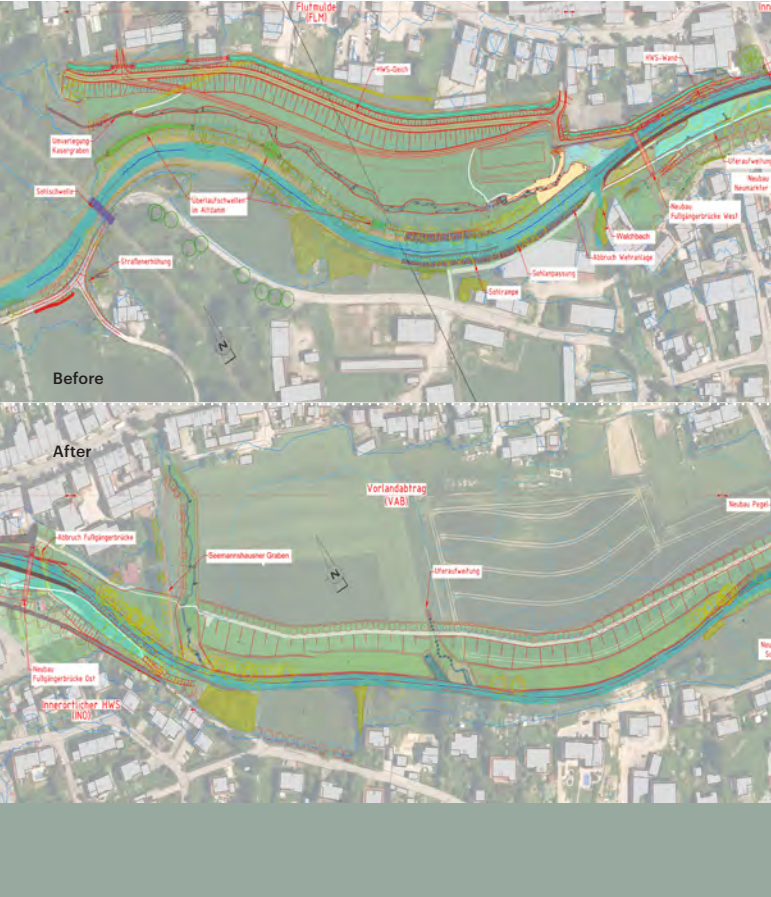
This project is part of the programme for the “renovation and capacity adaptation of the Milhaud landing stages”. The initiative stems from a need to provide new ship berths and address the ageing of the Milhaud 1-5 landing stage to overcome operational limitations. It includes demolishing the existing Milhaud 1 landing stage and replacing it with a 450 m x 25 m landing stage (on 254 metal piles), creating a Ro-Ro berth (38.87 m x 34.40 m), dredging, and widening the anchor platforms, known as “ancillary works”. ●

↑
MONTPELLIER WESTERN BYPASS. HYDRAULICS.

📍 FRANCE • MONTPELLIER (34)

⚙️ VINCI AUTOROUTES
 AUTOROUTES DU SUD DE LA FRANCE

Ingerop and Actierra teams are working on the drainage design for the future 6.8 km, 2x2 lane road, ensuring hydraulic and ecological continuity for 16 structures that span the route. Part of the project is on the Mosson floodplain, with hydraulic modelling revealing a need to offset the development through river restoration work. This includes removing 500 m of dykes and excavating 57,000 m³ in berms to reconnect the floodplain and allow for more frequent floods. ●



↑ **ONE-HUNDRED-YEAR-FLOOD PROTECTION IN GANGKOFEN**

📍 GERMANY • GANGKOFEN

🏢 DEGGENDORF
WATER MANAGEMENT OFFICE

The project involves constructing a ramp in the riverbed to replace an existing weir and restore ecological continuity while also widening banks and creating a new dam, several protective walls in the town centre, and a diversion channel.

This required preliminary hydrological analyses and digital simulations for hydraulics.

The design principles applied include:

- Long-term flood and flash-flood protection
- Maintenance or restoration of ecosystem functions
- Improved recreational appeal. ○

↑ **RABODANGES LAKE SHORE DEVELOPMENT**

📍 FRANCE • PUTANGES-LE-LAC (61)

🏢 PUTANGES-LE-LAC MUNICIPALITY

Located in the north of the Orne department, the municipality of Putanges-le-Lac set out to develop a natural site at Rabodanges Lake and create a safe swimming area. Development work included:

- A new dock for a cruise ship
- Securing and improving the swimming area
- Facilities for lifeguards and service areas
- Modifying pedestrian pathways and access to the shore, enhancing a pedestrian bridge, and improving site visibility and viewpoints.

The inauguration took place on 12 July 2023. ○



↑ RAISING THE STETTYSKLOOF DAM

📍 SOUTH AFRICA •
RAWSONVILLE – WESTERN CAPE

🏘️ BREEDE VALLEY MUNICIPALITY

The Stettynskloof Dam is a 48-metre-high concrete/rockfill dam on the Holsloot River near Rawsonville, with a capacity of 15 million cubic metres. It supplies water to Worcester, Rawsonville and local vineyards. The project includes a feasibility study for raising the dam to increase its storage capacity. This involves a hydraulic and structural analysis for an intermediate 4.5-metre spillway elevation using sluice gates and a final elevation of up to 25 metres. ●

↑ DOUBLING THE FONTINETTES LOCK

📍 FRANCE • ARQUES (62)

🏘️ VOIES NAVIGABLES DE FRANCE

Our experts are providing comprehensive management on the project to double the Fontinettes lock, aimed at easing congestion and improving safety on the high-capacity Dunkirk-Scheldt canal. The Seine-Nord Europe Canal project is expected to increase traffic. This infrastructure is notable for its size (13-metre drop height) and historical significance.

The design includes a BIM process begun at the outset of the project, spearheaded by Ingerop teams. The approach uses the Autodesk® Docs platform for model navigation, collaboration, annotations and issue resolution tracking. ●

ENERGY

“Our approach is built on four pillars: energy conservation, energy efficiency, renewables and nuclear power. Our expertise in the sector is well established, with over twenty years of experience in nuclear energy and a number of Basic Nuclear Installations (BNI) to our credit. We began diversifying ten years ago by providing technical solutions to decarbonise the industrial, tertiary and transport sectors. Our team has undertaken and completed more than 40 projects in green hydrogen production involving client support, concept design and detailed design and turnkey solutions. We are now in the process of stepping up our development in smart grids and electricity transmission networks.” • *Francois Laupretre* Director, Energy •

Talent



Tian Zhou

PROJECT MANAGER

“Our Pos'Hy software allows us to scale and optimise H₂ production, storage and distribution facilities by testing different scenarios: equipment selection, energy consumption analysis, investment allocation and operating cost assessment.” •



Luc Guegan

RTE PROJECT DIRECTOR

“Our expertise across the entire energy production and distribution chain now lets us manage a dozen projects to adapt the overhead network and explore connections for new clients, particularly industrial sites related to the energy transition.” •



↑
**MOBHYLYS PROJECT
 CREATING HYDROGEN FUELLING STATIONS
 AND A SOLAR FARM**

📍 FRANCE • LYON (69)

⚙️ AÉROPORTS DE LYON (ADL)

ADL has put in place an ambitious master plan to reduce CO₂ emissions and improve the energy performance of its infrastructure.

Ingerop teams are providing technical support to the client, including:

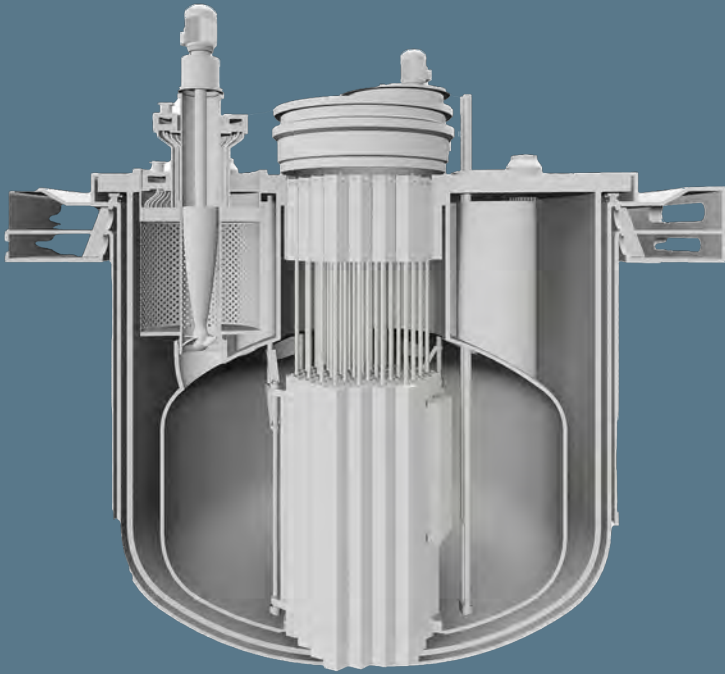
- Techno-economic studies for hydrogen production, storage, and distribution (5 MW), and photovoltaic electricity production (25,000 m² solar farm)
- Integration of regulatory requirements and Civil Aviation Authority rules
- Environmental studies: ICPE regulatory assessment, impact study and hazard study. ●

↑
VALLÉE SUD HYDROGEN PROJECT

📍 FRANCE • CHÂTENAY-MALABRY / CHÂTILLON (92)

⚙️ VALLÉE SUD HYDROGÈNE
 (HYNAMICS / VALLÉE SUD MOBILITÉS)

Ingerop is offering an unprecedented complete turnkey solution (design, build and commissioning) for two hydrogen fuelling stations as part of a temporary consortium. The first station will handle production, storage and distribution of hydrogen (5 MW electrolyser), while the second focuses on storage and distribution. The two stations will initially supply heavy vehicles operated by public entities (e.g. buses and bin lorries), with a daily production capacity of over two tonnes of hydrogen. ●



ADVANCED MODULAR REACTOR (AMR) AND FUEL PLANT

📍 FRANCE, ITALY AND UK

⚙️ NEWCLEO

newcleo offers a fourth-generation small nuclear reactor concept using recycled fuel. By 2030, the company—winner of the France 2030 Call for Projects—aims to create a 30 MWe lead-cooled fast reactor (LFR 30) and a fuel production facility to support decarbonisation, energy independence and a closed fuel cycle.

Ingerop and its subsidiaries (Geos, Actierra) bring *newcleo* expertise in designing these Basic Nuclear Installations (BNI). ●



CREATING UNDERGROUND LINES AND REHABILITATING OVERHEAD LINES

📍 FRANCE

⚙️ RTE

RTE, the French electricity transmission system operator, maintains and develops the country's high and very high voltage network.

The company brought in Ingerop under a framework agreement to handle complete concept design and detailed design to rehabilitate overhead lines and create underground lines. The goal is to meet the new development challenges of the power grid, connecting new production facilities and consumers, and adapting the network to climate change. ●



↑ SÜDOSTLINK (SOL)

📍 GERMANY

⚙️ TENNET TSO GMBH

SüdOstLink is a new high-voltage direct current (HVDC) line carrying wind-generated electricity from northern and eastern Germany to Bavaria. The project is a core component of Germany's plan to extend its network in line with the energy transition.

Ingerop is assisting TenneT with the Bavarian section, providing client support in vetting service providers, risk/delay/quality management, assistance with administrative permit applications, geotechnical study assessments, and partial line design. ●

↑ DISTRICT HEATING AND COOLING NETWORK USING HYDROTHERMAL ENERGY

📍 FRANCE • ANNECY (74)

⚙️ IDEX TERRITOIRES

Anancy's local authority has set a medium-term goal of stabilising energy consumption and reducing CO₂ emissions. As part of the construction of a new district, an underground heating and cooling network was created using water from the bottom of Lake Anancy, commissioned in 2023: a first in France. The energy-loop project was developed by SGI Suisse, which handled initial system design, complete concept design and detailed design, commissioning and operational support. The initiative will prevent 2,600 tonnes of CO₂ emissions per year. ●

INDUSTRY

“We are actively involved in the reindustrialisation of France. We implement comprehensive multidisciplinary approaches and draw on specific turnkey expertise in pharma processes, process engineering and infrastructure cybersecurity. Our cybersecurity subsidiary GLI leads the field and designs ANSSI-approved security system architectures for data centres. Artificial intelligence is also opening up new opportunities and innovative solutions to enhance the efficiency, reliability and sustainability of the equipment we design and build.” • *Jean-Luc Gaillard* Director, Industry •

Talent



Emmanuelle Agnesse

DEPUTY PROJECT DIRECTOR

“Selecting and deploying effective digital tools to meet stringent regulatory requirements in innovative sectors, such as the pharmaceutical industry, showcases the know-how and expertise of Ingerop employees.” •



Anthony Saint-André

PROJECT DESIGNER STEEL STRUCTURE

“By integrating data from SCIA software into the TEKLA modelling tool, we were able to streamline communication between different project stakeholders via BIM models, and ensure the quality and compliance of our deliverables on the Paul Wurth project.” •



↑ BATTERY CELL INNOVATION LAB

📍 FRANCE • LARDY (91)

⚙️ AMPERE, A NEW RENAULT GROUP COMPANY

Construction has begun on a Battery Cell Innovation Lab at the Lardy technical centre. The lab will enable Renault Group and its subsidiary Ampere to anticipate technological advances through a cell prototyping line and electro-physicochemical labs.

Ingerop Contracting, our turnkey project subsidiary and leader of an EPC consortium, will provide overall project management and handle construction of buildings and facilities alongside partners specialising in clean rooms, dry rooms and HVAC systems. ●

↑ RESEARCH & DEVELOPMENT LABORATORY

📍 FRANCE • CÉBAZAT (63)

⚙️ MFP MICHELIN

Our teams are handling complete concept design and detailed design for this new 7,000 m² research facility, which has two standout features:

→ Bioclimatic design: energy efficiency, decarbonisation and thermal comfort to achieve BREEAM Very Good certification (520 m² of photovoltaic panels, low-carbon materials, timber frame and green patios to make the most of natural lighting).

→ Laboratory equipment master plan: 2D and 3D layouts to ensure relevant use of available space, equipment ergonomics, and location of utilities for 110 fume cupboards. ●



STEEL DECARBONISATION UNIT

📍 GERMANY • WALSUM

⚙️ PAUL WURTH - SMS GROUP (FOR
THYSSENKRUPP EUROPE)

Thyssenkrupp has launched a comprehensive programme to decarbonise its steel production. Ingerop teams are supporting this transformation by constructing a new production facility near Duisburg, Germany. Ingerop is handling execution studies for the entire steel framework of the building housing the main furnaces (Open Bath Furnace Building), including all assemblies and anchor points for civil engineering. The building spans 8,000 m² and stands 110 m tall, with a total steel mass of 12,800 tonnes.

The plant will eventually reduce production of CO₂ by 3.5 million tonnes. ●



BIOTHERAPEUTICS FACILITY

📍 FRANCE • TOULOUSE (31)

⚙️ JUST - EVOTEC BIOLOGICS

As construction manager, Ingerop teams are assisting Just Evotec Biologics in designing and building its new J.POD® Toulouse unit, an innovative and flexible bioproduction facility for future biomedicines. Pharmaceutical production requires strict monitoring and recording of production and environmental data. For this project, we are using a comprehensive Building Management System that meets the requirements of the 21 CFR Part 11 standard on electronic records and signatures used by the European and American drug administrations. ●



↑ PHARMACEUTICAL FACILITY

📍 FRANCE • ARRAS (62)

⚙️ LFB

Following the completion of a concept design and detailed design assignment to build a quality control laboratory, LFB again turned to Ingerop to handle concept design and detailed design for the design and construction of new facilities, including the "Plasma" warehouse (for the intake, sorting and storage of plasma bags).

Our multidisciplinary approach spans expertise in industrial architecture, structure, roads and utilities, HVAC and electrical engineering, construction economics, pharmaceutical expertise and acoustics. ●

↑ PRODUCTION UNITS

📍 GERMANY

⚙️ BMW GROUP

For years, the BMW Group has trusted Ingerop Deutschland teams with a range of project management assignments including design and build, scheduling, oversight and coordination, and quality control. These projects cover both new constructions and factory redevelopments in Munich, Regensburg, Landshut, Leipzig and Wackersdorf. ●

INFRASTRUCTURE

“New mobility hubs and electric transport infrastructure are rising to the challenge of sustainable mobility. We are redeploying part of our skills and, with Ingerop's expertise, we now offer a unique range of solutions for transition engineering. Upstream, we help our clients articulate their development needs then provide technical, environmental and regulatory engineering solutions. Our goal is to improve energy conservation, reduce footprints and optimise project characteristics.” ●

Frédéric Burton Director, Infrastructure •

Talent



Emma Gennesseaux

ENGINEER OVERSEEING
STUDIES AND WORKS

“As part of the Golf Facilities project, our client installed photovoltaic canopies over the parking lots and we researched solutions to reuse and recycle materials on their behalf.” ●



Hugo Humnzian

STUDY MANAGER

“I joined Ingerop in 2018 on a work-study programme. My final project before graduating focused on deploying digital processes in the field. I worked with the Bulldozair team to help calibrate the system to meet end requirements. This helped me ensure timely delivery on the Pleyel Interchange construction site while meeting the client's requirements.” ●



↑ NORTHERN EXTENSION TO GOLF FACILITIES

📍 FRANCE • ORLY (94)

🏢 AÉROPORT DE PARIS (ADP)

The project aims to reconfigure stand G08 and extend the “Golf” facilities (creating stands G09 and G10), update the associated taxiways and create a new PARIF* with a view to addressing the shortage of aircraft stands at Paris-Orly Airport. The Golf facilities will be extended northward as an extension of the existing facilities. ●

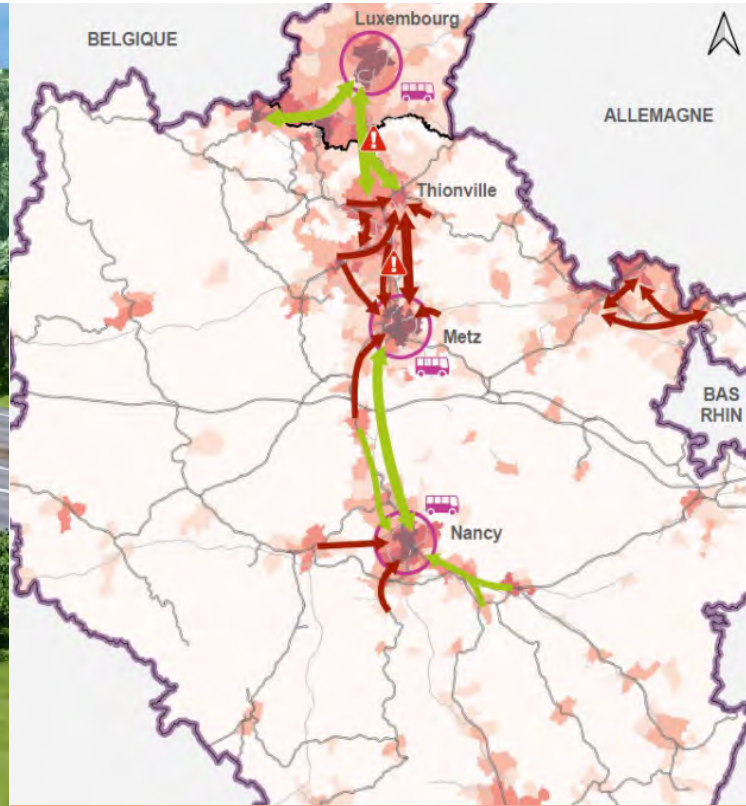
* PARIF: Filter Inspection Road Access Unit

↑ LYON-TURIN BASE TUNNEL

📍 FRANCE • SAINT-JULIEN-MONTDENIS (73)

🏢 TUNNEL EURALPIN LYON TURIN

The cross-border section of the new Lyon-Turin line is a 67 km railway linking Saint-Jean-de-Maurienne in France to Susa in Italy. It includes the excavation of a 57.5 km twin-tube base tunnel at Mont-Cenis. Ingerop is part of the concept design and detailed design consortium for CO8 site operation responsible for building the French tunnel entrance structure and excavating and lining the first 3 km of both tubes. Related tasks include design studies, concept design and detailed design during the construction phase. ●



CREATING LANES RESERVED FOR PUBLIC TRANSPORT AND A MULTIMODAL HUB

📍 FRANCE • STRASBOURG (67)

🏢 EUROMÉTROPOLE DE STRASBOURG

Following the transfer of the road network from the national government to Eurométropole de Strasbourg, the concept design and detailed design mission involves redeveloping the urban sections of the former A35 and A351 motorways, including:

- Creating lanes reserved for public transport on the M351 and M35 to access the station from the West
- Creating a multimodal hub serving the University Hospital and the HautePierre district
- Constructing several kilometres of cycle paths and a footbridge connecting the Cronembourg district and Parc des Romains. ●



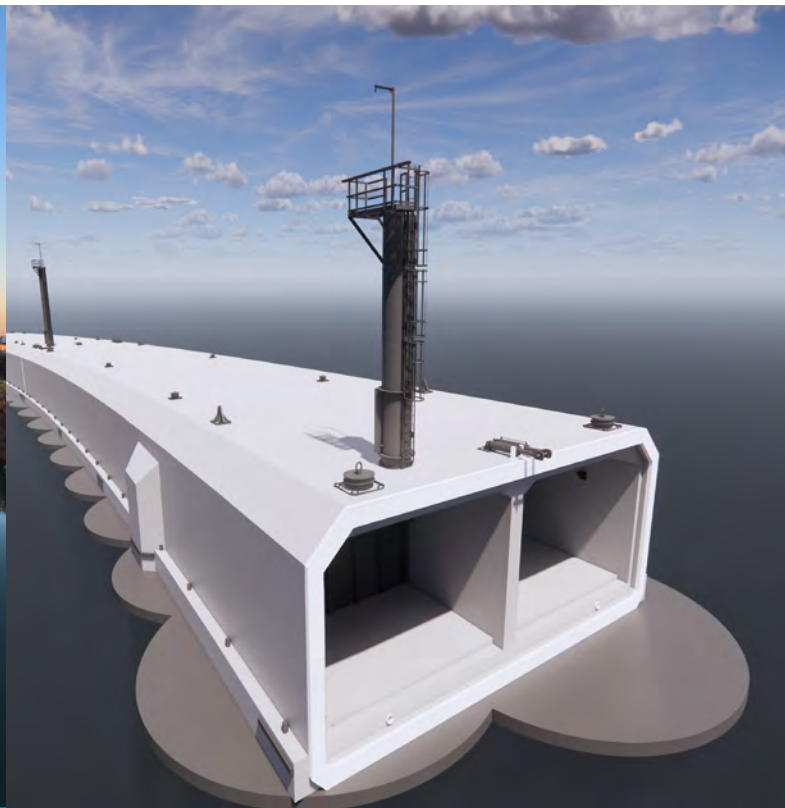
MULTIMODAL FEASIBILITY STUDY FOR THE SERM MASTER PLAN LORRAINE – LUXEMBOURG

📍 LORRAINE – LUXEMBOURG

🏢 SOCIÉTÉ DES GRANDS PROJETS

Société des Grands Projets commissioned Ingerop to conduct a multimodal feasibility study as part of a consortium including Ecomodal (rail freight). The study will underpin a comprehensive plan for the Lorraine-Luxembourg Metropolitan Express Regional Service (SERM).

It will also provide an assessment of the region and mobility solutions to determine service objectives and suggest solutions for passengers (rail, express buses, non-motorised modes, carpooling and cross-functional aspects). ●



↑ GRAND PARC GARONNE RAPAS FOOTBRIDGE

📍 FRANCE • TOULOUSE (31)

🏢 TOULOUSE MÉTROPOLE

Toulouse Métropole aims to open up Île du Ramier to the surrounding neighbourhoods. The Rapas footbridge on the left bank of the Garonne will connect the island to the Fer à Cheval district. Ingerop is providing integrated engineering services for this design-build project.

The footbridge's main span over the Garonne measures 163 m, consisting of a metal superstructure with side boxes and an orthotropic deck. The span is supported by five pairs of stays suspended from an inverted-Y pylon, inclined at 20° and standing 65 m tall. ●

↑ WESER IMMERSSED TUNNEL

📍 GERMANY • BREMEN

🏢 DEGES

Our German and British subsidiaries are providing detailed designs for all structures of the immersed tunnel under the Weser downstream from Bremen. Given the extreme hydrogeological conditions, the tunnel will be constructed using a cut-and-cover method, including trenches and excavation pits with diaphragm walls and an underwater concrete slab.

The whole process is particularly challenging due to the variable density of the ground, ranging from soft to marshy soil. ●

TRANSPORTATION

“Our expertise fully addresses the latest needs of cities and the growth of regions. We cover all modes of transport with crucial capabilities in decarbonisation, automation, accessibility, reliability and safety. Whatever the geographic, ecological, economic or demographic constraints, our proficiency in handling the complexity of transport systems and our expertise in O&M engineering puts us in a position to deliver technical solutions tailored to the needs of each project. That sets us apart.” • *Philippe-André Hanna* Director, Transport •

Talent



Richard Poulton

MANAGING DIRECTOR, T&RS ENGINEERING

“T&RS is proud to be a leading player in rolling-stock engineering. We created TRSEdigiDocs to provide a digital platform for storing and sharing maintenance and overhaul documentation for train fleets. The platform is readily accessible online and offers interactive features that promote continuous improvement in the quality of our projects.” •



Manon Talon

UPSTREAM STUDY MANAGER
TRANSPORT & MOBILITY COORDINATOR,
TRANSPORT

“My career at Ingerop, first at head office then in Grenoble, has led me to shoulder two responsibilities in Madrid. I am currently involved in a consultancy and technical support job in South Africa, funded by the French Development Agency to enhance and extend the Gautrain concession.” •



↑ **GRAND PARIS EXPRESS – LINE 15 WEST**

📍 FRANCE • HAUTS-DE-SEINE (92)

⚙️ SOCIÉTÉ DES GRANDS PROJETS

The first design-build contract for Line 15 of the Grand Paris Express was awarded in 2023 to the Intencités15 consortium, led by Vinci, with Ingerop playing a key role. Drawing on its overarching expertise in transport systems, electrification, infrastructure and BIM, the group can effectively meet project needs and rise to tomorrow's challenges in urban transport. Ingerop is also handling overall coordination for the entire 14 km route, including five stations and 16 service structures. ●

↑ **REGENERATION AND MODERNISATION OF SAINT-GERVAIS-VALLORCINE RAILWAY**

📍 FRANCE • HAUTE SAVOIE (74)

⚙️ SNCF RÉSEAU

Ingerop is handling comprehensive concept design and detailed design for the modernisation of the Saint-Gervais-les-Bains-Le Fayet line to Vallorcine via Chamonix-Mont-Blanc for SNCF Réseau. This includes renovating approximately 12 km of infrastructure and the third rail to supply electricity.

The track's poor state of repair has forced the operator to reduce train speeds on several sections. The goal is to maintain current performance and restore the nominal speed of 70 km/h.

Ingerop concept design and detailed design services span all phases from preliminary design (completed in 2023) to construction, scheduled during operational shutdowns from 2025 to 2028. ●



SUPERVISION CONTRACT FOR LINE 1 OF THE LAUSANNE TRAMWAY

📍 SWITZERLAND • LAUSANNE

⚙️ TRANSPORTS PUBLICS DE LA RÉGION LAUSANNOISE

Ingerop delivers sustainable mobility expertise through its rolling-stock engineering unit to offer comprehensive transport project services. Working with its Spanish subsidiary, the group is supervising the manufacturing of rolling stock for Line 1 of the Lausanne tramway at Stadler's Valencia plant in Spain. Leedeo, Ingerop's new subsidiary in Barcelona, is also the Reliability, Availability, Maintainability and Safety (RAMS) expert for tram systems in Bern, Milan, Naples and Alicante. ●



EXTENSION OF MARSEILLE TRAM SYSTEM FROM RUE DE ROME TO PLACE DU QUATRE SEPTEMBRE

📍 FRANCE • MARSEILLE (13)

⚙️ MÉTROPOLE AIX-MARSEILLE-PROVENCE

Ingerop is working with its partners to provide comprehensive concept design and detailed design (infrastructure & systems) on the 2.1 km tramway extension, including four new stations. The extension will serve over 40,000 residents in the heart of Marseille's Low Emission Zone.

The project includes the construction of a new parking facility primarily for local use and promotes active modes of transport. This will round out the broad outline of Marseille's tram system, at an estimated cost of €56 million. ●



↑ CONSTRUCTION OF THE NEW BAUD CHARDONNET BUS DEPOT

📍 FRANCE • RENNES (35)

🏢 RENNES MÉTROPOLE

Ingerop is managing the construction of a new bus storage and maintenance facility to accommodate Rennes' new fleet of electric buses.

Spanning six hectares, the new depot is part of Rennes' energy transition campaign, which aims to replace diesel buses with electric counterparts on urban routes by 2030.

The project includes a storage and charging area for 300 buses, a maintenance workshop and a central control centre. ●

↑ METTIS C BRT

📍 FRANCE • METZ (57)

🏢 EUROMÉTROPOLE DE METZ

The third route of the "METTIS C" bus rapid transit (BRT) system aims to enhance public transport in the southern part of Metz, improving north-south travel and access to the city centre and train station. The route will feature hydrogen-powered bi-articulated buses, with separate lanes for smooth and environmentally friendly transit. A key challenge lies in supplying hydrogen while ensuring efficient operation. Ingerop has brought its full range of multidisciplinary expertise to the bear in creating the new BRT route. ●

URBAN DEVELOPMENT

“Cities are highly exposed to the effects of climate change. Our clients face a pressing need to implement effective solutions in rising to the dual challenge of adaptation and mitigation. Our teams are fully engaged in this effort. Their expertise and pragmatism provide concrete solutions with regard to usage, mobility, water management, renaturation and reuse. Their attentive, collaborative approach draws on a range of skills to design the optimal project for each region, clearly addressing the individual needs of each client.” • *Carine Dumogier* Director, Urban Development •

Talent



Cristina Lagos

CLIENT SUPPORT & CONCEPT DESIGN
AND DETAILED DESIGN
URBAN & REGIONAL DEVELOPMENT

“We give our clients tailored digital tools to tackle environmental challenges and lifestyle changes. I have the backing of a passionate multidisciplinary team and the cross-functional expertise of a large group.” •



Mathieu Metayer

HEAD OF URBAN DEVELOPMENT,
URBAN ENGINEERING DEPARTMENT

“My team and I work on projects of all sizes that address current issues: user comfort, carbon reduction, resilience, accessibility, inclusivity, safety, acceptability and co-construction with all stakeholders. Given the inherent complexity, digital tools enhance our operational agility.” •



↑ PEDESTRIANISATION AND REDEVELOPMENT OF COURS SEXTIUS

📍 FRANCE • AIX-EN-PROVENCE (13)

⚙️ SEM D'EQUIPEMENT DU PAYS D'AIX (SEMEPA)

The pedestrianisation of Cours Sextius, to the west of Aix-en-Provence's old town, is part of the extensive redevelopment of the Faubourg district.

The historic site features several fountains and the iconic Aix thermal baths with their hot springs.

The redevelopment initiative aims to create public spaces that are peaceful, permeable and cool, highlighting the presence of water.

Beyond enhancing climatic comfort, the planned changes include significant vehicle access restrictions through comprehensive access control measures. ●

↑ GARE DE MINES-FILLETES – PARVIS ARENA 2 URBAN DEVELOPMENT

📍 FRANCE • PARIS (75)

⚙️ PARIS & MÉTROPOLE AMÉNAGEMENT

The Mines-Fillettes Urban Development Zone is redefining northeast Paris by creating a mixed-use district spanning 20 hectares with 146,000 m² of floor space.

At the heart of the project sits the Arena Porte de la Chapelle, a major sports facility for the 2024 Olympics, opening onto a large plaza.

Delivered at the end of 2023, the new green space can accommodate 8,000 visitors and features a rain garden. This project involves transforming existing structures in a complex environment that includes existing networks and gypsum subsoil.

With 35% permeable surfaces, the natural setting embodies Paris's vital adaptation to climate change. ●



MEDIA CLUSTER FOR THE OLYMPIC AND PARALYMPIC GAMES (MEDIA VILLAGE SECTOR)

📍 FRANCE • DUGNY (93)

🏗️ SOLIDEO (SOCIÉTÉ DE LIVRAISON DES OUVRAGES OLYMPIQUES)

The Media Village for the 2024 Olympic and Paralympic Games includes 15 buildings (952 housing units), a school and public spaces spanning two sectors (8.4 hectares). Construction took place from late 2021 to the end of March 2024.

We planned all relevant work before everything got underway (e.g. Gantt chart, spatiotemporal scheduling). During the operational phase, coordination covered all construction sites within a very tight time frame, meaning a lot was happening all at once. It was our job to anticipate and stay proactive to stick to the overall deadline, which was no mean feat on this project. ●



BRAZZA - METROPOLITAN LAND DEVELOPMENT PROJECT

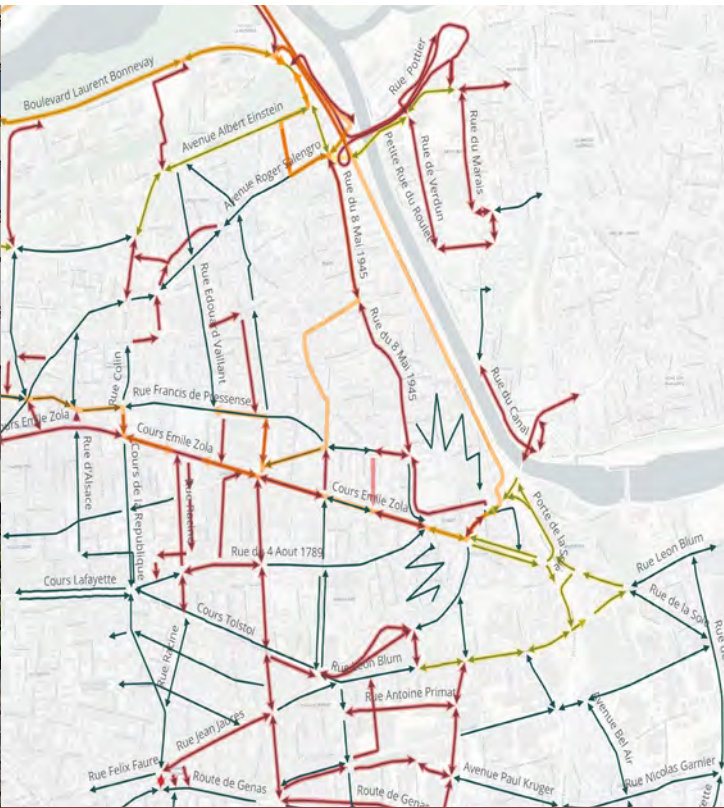
📍 FRANCE • BORDEAUX (33)

🏗️ BORDEAUX MÉTROPOLE

The project is rehabilitating 56 hectares of polluted and flood-prone industrial wasteland to create a mixed-use district (426,000 m² of floor space). It involves creating or redeveloping public spaces such as the Garonne river banks, squares, greenbelts and streets.

In providing client support, concept design and detailed design for public spaces, we are working with our partners to create a peaceful, renatured neighbourhood suited to sustainable modes of transport.

The goal is to have over 5,000 trees and 40% permeable surfaces. This outline provides the landscaping framework for the district. It is also a response to water-related challenges and the need to adapt to climate change, particularly with regard to tackling the issue of urban heat islands. ●



↑ ASSISTANCE ON DISRUPTIVE CONSTRUCTION SITES

📍 FRANCE • LYON (69)

🏡 MÉTROPOLE DE LYON

In urban areas, maintaining traffic flow during construction is a major challenge.

Since 2020, Ingerop has been collecting, categorising and mapping disruptions related to construction in and around Lyon.

We systematically digitise and analyse these data to define support and coordination measures, such as the need to maintain traffic routes. The goal is to keep the city's vital functions up and running.

"This mission has allowed us to develop digital tools, based on GIS technology, which specifically reflect the requirements of client support and coordination." 📍

↑ FEASIBILITY STUDIES FOR THE DEVELOPMENT OF FOUR CONNECTIONS TO VÉLO+ NETWORK (85 KM)

📍 FRANCE • LILLE (59)

🏡 MÉTROPOLE EUROPÉENNE DE LILLE

Vélo+ is a key project as part of Lille Métropole's 2035 mobility plan and a flagship initiative in the drive to create a forward-looking network of bike paths.

The goal is to provide cyclists with high-quality, secure, continuous and convenient routes throughout the metropolitan area. It will eventually establish a complete cycling network in and around the city to facilitate travel over longer distances.

It also aims to provide clear, distinctive signage, making Vélo+ an easily identifiable network with broad appeal. An initial study is underway using GIS (QGIS). 📍

LEADERSHIP TEAM

Ingerop's leadership team comprises a Board of Directors, an Executive Committee and a Management Committee. This structure allows us to shape the Group's strategic direction, enhance its operational management and ensure its economic sustainability.

BOARD OF DIRECTORS

The Board of Directors has eight members, including two independent directors. It provides strategic direction and oversight for the Group's business activities.

Yves Metz

President

Chloé Clair

Independent Director
CEO of namR

Carine Dunogier

Director, Urban Development
Deputy Regional Director, Grand Ouest

Stéphanie Dupuy- Lyon

Independent Director
Chief Sustainability Officer
La Poste Group

François Lacroix

Chief Science & Technology Officer

Virginie Lanfrey

Director, Infrastructure
Rendel

Stéphane Potin

Director of Operations, France
Regional Director for Alpes-Centre-Est
Director, Infrastructure,
Urban Development & Transportation

Thomas Sontag

Managing Director
Ingerop Deutschland

EXECUTIVE COMMITTEE

The Executive Committee assists the president in the operational management of the group, with a focus on its organisation and preparation of strategic decisions.

Yves Metz

President

Christophe Blanc

International Director

Frédéric Burton

Director, Infrastructure
Deputy Director, Infrastructure,
Urban Development & Transportation

Stéphane Gautier

General Secretary
Head of Corporate Services

François Lacroix

Chief Science & Technology Officer

Stéphane Potin

Director of Operations, France
Regional Director for Alpes-Centre-Est
Director, Infrastructure, Urban Development & Transportation

Ludovic Vaz

Director, Buildings



Left to right,
top to bottom:

Yves Metz
Christophe Blanc
Frédéric Burton
Chloé Clair
Carine Dunogier
Stéphanie Dupuy-Lyon
Stéphane Gautier

François Lacroix
Virginie Lanfrey
Stéphane Potin
Thomas Sontag
Ludovic Vaz

MANAGEMENT COMMITTEE

The Management Committee includes members of the Executive Committee and the Ingerop management team. It serves as a forum for discussing the Group's operations and strategic direction.

Pierre Albasi

International Deputy Director

Olivier Bartoli

Director, Infrastructure & Urban Development,
Deputy Director Alpes-Centre-Est

Mathias Boutillier

Director, Nord Est

Neel Daya

Managing Director of Ingerop International
Consultants
& Ingerop South Africa

Carine Dunogier

Director, Urban Development
Deputy Director, Grand-Ouest

Jacques-Olivier Durand

Human Resources Director
& General Counsel

Jean-Luc Gaillard

Director, Industry
Deputy Director, Alpes-Centre-Est

Ludovic Gautier

Director, Mediterranean & Indian Ocean

Vardaman Jones

Managing Director, Rendel

Alexander Kammerl

Managing Director, Ingerop Deutschland

François Lauprêtre

Director, Energy
Deputy Director, Alpes-Centre-Est

Véronique Letreut

Director, Quality, Safety & Environment
& Chief Ethics Officer, France

Marc De Maria-Martin

Chief Financial Officer

Philippe Nanot

Director, Grand-Ouest

Michel Poinignon

Deputy Director, Infrastructure,
Urban Development & Transportation

Olivier Poulet

Advisor to the Director of Operations, France

Thomas Sontag

Managing Director, Ingerop Deutschland

Emmanuel Viglino

Director, Arcora



Left to right, top to bottom:

Pierre Albasi

Olivier Bartoli

Mathias Boutillier

Neel Daya

Carine Dunogier

Jacques-Olivier Durand

Jean-Luc Gaillard

Ludovic Gautier

Vardaman Jones

Alexander Kammerl

François Lauprêtre

Véronique Letreut

Marc De Maria-Martin

Philippe Nanot

Michel Poinsignon

Olivier Poulet

Thomas Sontag

Emmanuel Viglino

CERTIFICATION & ACCREDITATION

CERTIFICATION IN FRANCE



Ingerop, Cicad, Guez Caraïbes, Ingerop Conseil & Ingénierie, Arcora, Geos and Ingerop Engineering and Actierra are certified to the ISO 9001 quality standard. Ingerop, Ingerop Conseil & Ingénierie, Arcora and Ingerop Engineering are also certified to the ISO 14001 environmental standard and the ISO 45001 safety standard.



Ingerop Conseil & Ingénierie, Guez Caraïbes, Arcora, Cicad and Geos are OPQIBI-approved for over 125 mission types.



Guez Caraïbes



Alpes-Centre-Est Region



Clermont-Ferrand Branch



CICAD

INTERNATIONAL CERTIFICATION



Ingerop in Quebec



Ingerop in Spain



Rendel in the UK,
Rendel-Ingerop
in Australia



Ingerop Deutschland



Ingerop Deutschland



Ingerop Deutschland



Ingerop Deutschland



Ingerop in
South Africa



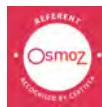
Ingerop in Chile



GEOS in
Switzerland

ACCREDITATION

Ingerop employees hold accreditation to help clients obtain environmental labels.



FRENCH OFFICES

ÎLE-DE-FRANCE

Rueil-Malmaison (HQ)
Tel: +33 (0)1 49 04 55 00
ingerop@ingerop.com

Bruyères-le-Châtel
Campus Teratec
Tel: +33 (0)9 70 65 02 00
ingerop.clermont@ingerop.com

Tours
Tel: +33 (0)2 47 80 75 90
ingerop.tours@ingerop.com

GRAND-OUEST

Bordeaux
Tel: +33 (0)5 56 47 79 79
ingerop.bordeaux@ingerop.com

Biarritz
Tel: +33 (0)5 59 58 23 23
ingerop.cotebasque@ingerop.com

Dieppe
Tel: +33 (0)6 79 12 03 99
contact-dieppe@ingerop.com

Nantes
Tel: +33 (0)2 40 94 96 00
ingerop.nantes@ingerop.com

Rennes
Tel: +33 (0)2 99 83 03 10
ingerop.ouest@ingerop.com

Toulouse
Tel: +33 (0)5 62 47 59 59
ingerop.toulouse@ingerop.com

ALPES-CENTRE-EST

Lyon
Tel: +33 (0)4 37 23 11 40
ingerop.lyon@ingerop.com

Annecy
Tel: +33 (0)4 50 52 75 77
ingerop.annecy@ingerop.com

Clermont-Ferrand
Tel: +33 (0)4 73 16 34 34
ingerop.clermont@ingerop.com

Dijon
Tel: +33 (0)3 81 81 39 33
ingerop.dijon@ingerop.com

Grenoble
Tel: +33 (0)4 76 41 18 90
ingerop.grenoble@ingerop.com

Marcoule
Tel: +33 (0)4 66 33 78 48
ingerop.clermont@ingerop.com

Vienne
Tel: +33 (0)4 74 53 22 58
ingerop.vienne@ingerop.com

NORD-EST

Lille
Tel: +33 (0)3 20 59 15 50
ingerop.nord@ingerop.com

Besançon
Tel: +33 (0)3 81 81 39 33
ingerop.besancon@ingerop.com

Metz
Tel: +33 (0)3 87 76 53 20
ingerop.metz@ingerop.com

Strasbourg
Tel: +33 (0)3 88 13 60 60
ingerop.strasbourg@ingerop.com

Valenciennes
Tel: +33 (0)3 27 51 56 00
ingerop.valenciennes@ingerop.com

MEDITERRANEAN

Marseille
Tel: +33 (0)4 91 72 04 00
ingerop.marseille@ingerop.com

Aix-en-Provence
Tel: +33 (0)4 42 50 83 00
ingerop.aix@ingerop.com

Montpellier
Tel: +33 (0)4 67 27 39 62
ingerop.montpellier@ingerop.com

Nice
Tel: +33 (0)4 92 13 32 10
ingerop.nice@ingerop.com

Sainte-Clotilde (Reunion)
Tel: +33 (0)2 62 73 13 13

Tricastin
Tel: +33 (0)6 16 32 85 45
contact-tricastin@ingerop.com

& FRENCH SUBSIDIARIES

ARCORA

Rueil-Malmaison
Tel: +33 (0)1 49 04 67 00
arcora@arcora.com

ACTIERRA

Rueil-Malmaison
Tel: +33 (0)1 49 04 57 81
actierra@actierra.com

Aix-en-Provence
Tel: +33 (0)4 42 50 83 00
actierra@actierra.com

Bordeaux
Tel: +33 (0)2 47 80 75 90
actierra@actierra.com

Grenoble
Tel: +33 (0)4 74 53 86 50
actierra@actierra.com

Lille
Tel: +33 (0)3 20 59 18 15
actierra@actierra.com

Lyon
Tel: +33 (0)4 74 53 86 50
actierra@actierra.com

Marseille
Tel: +33 (0)4 91 72 74 42
actierra@actierra.com

Montpellier
Tel: +33 (0)4 91 72 74 42
actierra@actierra.com

Rennes
Tel: +33 (0)2 47 80 75 90
actierra@actierra.com

Strasbourg
Tel: +33 (0)3 88 13 60 37
actierra@actierra.com

Toulouse
Tel: +33 (0)4 27 80 75 90
actierra@actierra.com

Tours
Tel: +33 (0)2 47 80 75 90
actierra@actierra.com

Vienne
Tel: +33 (0)4 74 53 86 50
actierra@actierra.com

ATELIER DES TERRITOIRES ACTIERRA SUBSIDIARY

Metz
Tel: +33 (0)3 87 63 02 00
Atelier.territoire@atelier-territoires.com

Colmar
Tel: +33 (0)3 89 24 12 99
waltzer@atelier-territoires.com

ACXES BY INGEROP

Gondrecourt-le-Château
Tel: +33 (0)4 73 16 34 02
contact@acxesbyingerop.com

AVLS

Orsay
Tel: +3 (0)1 64 46 08 08
info@avls-fr.com

CICAD

Montreuil
Tel: +33 (0)1 55 86 15 15
contact@cicad.fr

DELTAÈDRE ENGINEERING

Labège
Tel: +33 (0)5 62 26 11 18
contact@deltaedre.fr

GEOS INGÉNIEURS CONSEILS

Rueil-Malmaison
Tel: +33 (0)1 49 04 68 10
geos.contact@geos.fr

Lyon
Tel: +33 (0)4 37 23 11 40
geos.contact@geos.fr

GLI

Montreuil
Tel: +33 (0)1 84 86 07 00
contact@gli.fr

Jonage
Tel: +33 (0)4 72 35 23 40
contact@gli.fr

GUEZ CARAÏBES

Martinique - Le Lamentin
Tel: +33 (0)5 96 50 98 70
betmartinique@guezcaraiibes.fr

Guadeloupe - Baie-Mahault
Tel: +33 (0)5 90 25 07 44
betguadeloupe@guezcaraiibes.fr

Saint-Martin - Grand Case
Tel: +33 (0)6 90 26 26 76
betsaintmartin@guezcaraiibes.fr

INGEROP CONTRACTING

Tel: +33 (0)4 42 50 83 00

INGEROP LIFE SCIENCES

Tel: +33 (0)1 49 04 55 00
contact@i-ls.com

MAZET & ASSOCIÉS

Paris 11^e
Tel: +33 (0)1 78 94 75 25
administration@mazet-associés.com

INTERNATIONAL OFFICES

EUROPE

ARCORA LUXEMBOURG

Luxembourg-Strassen
Tel: +33 (0)1 49 04 67 00
arcora@arcora.com

BAU + PLAN INGENIEURGESELLSCHAFT MBH

Germany - Munich
Tel: +49 89 818962 17
markus.ruck@plan-gmbh.de

GEOS INGÉNIERS CONSEILS

Switzerland - Geneva
Tel: +41 22 309 30 60
geos@geos.ch

IBF INGENIEURGESELLSCHAFT MBH

Germany - Munich
Tel: +49 89 71093 0
mail@ibf-ingenieure.de

Germany - Augsburg
Tel: +49 89 71093 0
mail@ibf-ingenieure.de

INGEROP BELGIUM SRL

Tel: +33 (0)1 49 04 55 61
ingerop.international@ingerop.com

INGEROP BG EOOD

Bulgaria - Sofia
ingerop.international@ingerop.com

INGEROP DEUTSCHLAND

Germany - Berlin
Tel: +49 30 8471279 0
info@ingerop.de

Germany - Dessau-Rosslau
Tel: +49 340 64010 10
info@ingerop.de

Germany - Dresden
Tel: +49 351 892491 0
info@ingerop.de

Germany - Essen
Tel: +49 201 878980 0
info@ingerop.de

Germany - Kempten
Tel: +49 831 254486 70
info@ingerop.de

Germany - Hamburg
Tel: +49 40 8559934 0
info@ingerop.de

Germany - Munich
Tel: +49 351 892491 0
info@ingerop.de

Germany - Nuremberg
Tel: +49 911 968496 0
info@ingerop.de

Germany - Offenbach-sur-le-Main
Tel: +49 69 971019 0
info@ingerop.de

Germany - Offenbourg
Tel: +49 781 960532 0
info@ingerop.de

Germany - Stuttgart
Tel: +49 711 120481 0
info@ingerop.de

INGEROP LATVIA

Latvia - Riga
Tel: +34 655 42 07 74
ingerop.international@ingerop.com

INGEROP MN D.O.O.

Montenegro - Podgorica
ingerop.international@ingerop.com

INGEROP POLSKA SP. Z.O.O.

Poland - Warsaw
ingerop.international@ingerop.com

INGEROP T3

Spain - Madrid
Tel: +34 91 758 48 99
madrid@ingerop.es

Spain - Barcelona
Tel: +34 93 323 86 05
barcelona@ingerop.es

Spain - Grenade
Tel: +34 958 28 62 26
granada@ingerop.es

Spain - Santander
Tel: +34 91 758 48 99
santander@ingerop.es

Spain - Seville
Tel: +34 955 25 33 36
sevilla@ingerop.es

LEEDEO

Spain - Barcelona
Tel: +34 935 001 214
admin@leedeo.es

RENDEL INGEROP IRELAND LIMITED

Ireland - Dublin
Tel: +353 1 575 7823
dublin@rendel-ltd.ie

RENDEL LTD

UK - London
Tel: +44 20 7654 0500
london@rendel-ltd.com

UK - Birmingham
Tel: +44 121 809 6501
birmingham@rendel-ltd.com

UK - Bristol
Tel: +44 20 7654 0574
bristol@rendel-ltd.com

SGI INGENIERIE SA

Switzerland - Geneva
Tel: +41 (0)22 979 49 00
sgi_info.ch@sgi-ingerop.com

SMART2

Spain - Madrid
Tel: +34 91 161 07 90
smart2@smart2.es

T&RS ENGINEERING

UK - Doncaster
Tel: +44 (0)1302 315011
mail@trsengineering.co.uk

AFRICA

INGEROP INTERNATIONAL CONSULTANTS (PTY) LTD

Mauritius - Ebene
Tel: +230 454 68 68
ingerop@ingerop.mu

INGEROP SOUTH AFRICA

South Africa - Johannesburg
Tel: +27 11 808 30 00
jhb@ingerop.co.za

South Africa - Cape Town
Tel: +27 21 914 2833
ctn@ingerop.co.za

South Africa - Durban
Tel: +27 31 266 8363
dbn@ingerop.co.za

South Africa - Polokwane
Tel: +27 15 295 5810
plk@ingerop.co.za

INGEROP EAST AFRICA (PTY) LTD

Kenya - Nairobi
Tel: +254 020 800 8640
nbo@ingerop.ke

INGEROP BENIN

Benin - Cotonou
Tel: +229 21 31 20 76
ingeropbenin@ingerop.com

INGEROP AFRIQUE INGENIERIE

Senegal - Dakar
Tel: +221 33 824 92 58
ingerop@ingerop-afrique.com

INGEROP CÔTE D'IVOIRE

Ivory Coast - Abidjan
Tel: +225 27 22 20 37 02
ingerop@ingerop-afrique.com

INTEC

Tunisia - Tunis
Tel: +216 71 875 249
intec@intec.com.tn

HORIZON PROJECT MANAGEMENT

Morocco - Rabat
TEL: +212 537 77 21 11
CONTACT@HPMGROUPE.COM

SGI SENEGAL

Senegal - Dakar
Tel: +221 77 641 92 64
+221 33 832 58 08
sgi_info.sn@sgi-ingerop.com

SGI TANZANIA

Tanzania - Dar-es-Salaam
Tel: +255 760 360 690
tanzania@sgi-ingerop.com

NORTH AMERICA

INGEROP CANADA

Montreal - Quebec - Toronto
Tel: +1 514 998 0018
contact@ingerop.ca

INGEROP MEXICO

Mexico - Mexico City
Tel: +52 552 892 60 53
info@ingerop.es

SOUTH AMERICA

INGEROP PERU

Peru - Lima
Tel: +34 673 564 746
info@ingerop.es

INGEROP CHILE

Chile - Santiago du Chile
Tel: +56 2 664 17 78
info@ingerop.es

INGEROP COLOMBIA

Colombia - Medellin
Tel: +34 673 564 746
info@ingerop.es

ASIA-PACIFIC

INGEROSEC

Japon - Tokyo
Tel: +81 3 53 24 02 11
ingerosec@ingerosec.com

RENDEL INGEROP PTY LTD

Australia - Sydney
Tel: +61 (0)2 7205 6411
sydney@rendel.com.au

ASPEC

Australia - Brisbane
Tel: +61 7 3193 0400
admin@aspec.com.au

Australia - Newcastle
Tel: +61 2 4962 2314
admin@aspec.com.au

Australia - Perth
Tel: +61 8 6315 4200
admin@aspec.com.au

Australia - Wollongong
Tel: +61 2 4210 8777
admin@aspec.com.au

CREDITS

Cover

Rabat

© Bouygues Bâtiment Ile-de-France
Agences d'Architecture NP2F et SCAU

p. 3 : © Vinciane Lebrun-Verguethen

p. 4 : © Ingerop

p. 6 : © Ingerop

p. 7 : © Actierra

p. 8 : © Shoky Van der Horst, ©Ingerop

p. 10 : © Shoky Van der Horst, © Frank Rapatel
© Anne-Emmanuelle Thion

p. 11 : © Ingerop

p. 12 : © Shoky Van der Horst

p. 13 : © Ingerop

p. 14 : © Shoky Van der Horst

p. 20 : © Shutterstock - Scharfsiinn, © Ingerop,
© Air Scanner.jpg, © AFA-SANAE Architectures,
© Société des Grands Projets - JFS Architectes,
© Le groupement Renzo Piano Building
Workshop, © Rougerie+Tangram

p. 23 : © Le groupement Renzo Piano Building Workshop,
© groupe-6 architectes

p. 24 : © Data Architectes, © Atelier 26 Architectes,

p. 25 : © Duchier + Pietra Architectes, © Sam testimonio 2

p. 27 : © Jean Negri & fils, © Caudex

p. 28 : © Planning EDR GmbH / Dr Schober Gesellschaft
für Landschaftsplanung mbH, © Ingerop

p. 29 : © Ingerop, © Air Scanner

p. 31 : © Shutterstock - Scharfsiinn,
© Silvio D'ascia Architecture

p. 32 : © newcleo, © RTE

p. 33 : © TenneT TSO GmbH, © Google Earth

p. 35 : © AFA-SANAE Architecture,
© GRQ_Michelin_NORD OUEST
AO_HOR ©Groupe-6

p. 36 : © Shutterstock,
© Evotec SE_Benjamin Benschneider

p. 37 : © ARCH'ID, © AdobeStock

p. 39 : © Ingerop, © Caroline Moureaux

p. 40 : © Eurométropole de Strasbourg, © Ingerop,

p. 41 : © Eiffage, © Ingerop Deutschland

p. 43 : © Société des Grands Projets - JFS Architectes
© Vincent Do Huy - Ingerop

p. 44 : © Stadler, © ILEX et Antoine Derien

p. 45 : © GLG images&paysages, © Richez associés

p. 47 : © Rougerie+Tangram, © Ingerop

p. 48 : © SOLIDEO – Sennse - Dronepress,
© Bordeaux métropole - JP Menges

p. 49 : © Ingerop

p. 51 : © Shoky Van der Horst, © Sébastien Borda

p. 52 : © Shoky Van der Horst,



This document was produced using recyclable inks by a Imprim'Vert- and Print Ethic-certified printer on FSC-certified paper sourced from a sustainably managed forest.



18, rue des Deux Gares
CS 70081 - 92563 Rueil-Malmaison Cedex
Tel: +33 (0)1 49 04 55 00
ingerop@ingerop.com

Follow all the latest Ingerop news
at www.ingerop.fr
and on socials

